

PRODUCT APPROVAL DRAWINGS SERIES 381 IMPACT-RESISTANT DOORS WITH MULTIPLE GLAZING INFILLS & HARDWARE

INDEX TO DRAWINGS

- SHEET 1: INDEX TO DRAWINGS AND NOTES
- SHEET 2: TYPICAL ELEVATIONS FOR SERIES 381 IMPACT DOORS IN FL500 FRAMING WITH A TRANSOM
- SHEET 3: TYPICAL ELEVATIONS FOR SERIES 381 IMPACT DOORS IN FL500 FRAMING WITHOUT A TRANSOM
- SHEET 4-7: DOOR AND FRAMING DETAILS
- SHEET 8: GLAZING SCHEDULE
- SHEET 9: BILL OF MATERIALS
- SHEET 10: PERIMETER FASTENER LOCATIONS - FL500 DOORFRAME - CONCRETE SUBSTRATE
- SHEET 11: PERIMETER FASTENER LOCATIONS - FL500 DOORFRAME - STEEL SUBSTRATE
- SHEET 12: PERIMETER FASTENER LOCATIONS - FL500 DOORFRAME - WOOD SUBSTRATE
- SHEET 13: HARDWARE SCHEDULES
- SHEET 14: HARDWARE LOCATIONS

GENERAL NOTES:

TEST STANDARDS
 AIR-TAS202
 STATIC-TAS202
 IMPACT-TAS201
 CYCLIC-TAS203

DESIGN PRESSURE
 +70/-80 PSF

WATER INFILTRATION: NOT TESTED FOR WATER

AIR INFILTRATION: 6.24 PSF

TYPICAL GLASS BITE IS 3/4" UNLESS OTHERWISE NOTED

ALL ALUMINUM EXTRUSIONS SHALL BE MADE FROM 6063-T6.

THIS PRODUCT HAS BEEN DESIGNED AND TESTED TO COMPLY WITH FLORIDA BUILDING CODE ADDITION 2004 INCLUDING HIGH VELOCITY HURRICAN ZONES.

MATERIALS, INCLUDING BUT NOT LIMITED TO STEEL SCREW, THAT COME IN CONTACT WITH DISSIMILAR MATERIALS SHALL MEET THE REQUIREMENTS OF 2004 FLORIDA BUILDING CODE SECTION 2003.8.4

FL500 AND FL550 FRAMING ARE UNDER SEPERATE SUBMISSIONS

ABBREVIATIONS:

- D.L.O. = DAY LIGHT OPENING
- D.O.H. = DOOR OPENING HEIGHT
- D.O.W. = DOOR OPENING WIDTH
- C.O.C. = CONCEALED OVERHEAD CLOSER
- C.V.R. = CONCEALED VERTICAL ROD
- TYP. = TYPICAL
- S.A.C.= SURFACE APPLIED CLOSER

DEFINITIONS: DICTIONARY OF ARCHITECTURE & CONSTRUCTION-2ND EDITION

- 1. SIDE LIGHT - A FRAMED AREA OF FIXED GLASS ALONGSIDE A DOOR
- 2. TRANSOM FRAME - A DOORFRAME WITH A TRANSOM BAR AND GLASS ABOVE THE DOOR

Lewis A. Waldrop, P.E.
 P. O. Box 620
 Alto, GA 30510
 706-778-3784

Lewis A. Waldrop, P.E.
 FLA. P.E. #21959

Lewis A. Waldrop
 2/21/08

REV	BY	DATE	DESCRIPTION

Coral
 Architectural Products
 3010 RICE HINE ROAD, TUSCALOOSA, AL 35405
 PHONE: 800-772-7737 FAX: 800-255-7320

PRODUCT APPROVAL DRAWINGS
 SERIES 381 DOORS-IMPACT
 PROTOCOLS: PA201/202/203
 GENERAL NOTES AND INFORMATION

DATE 1/8/2008

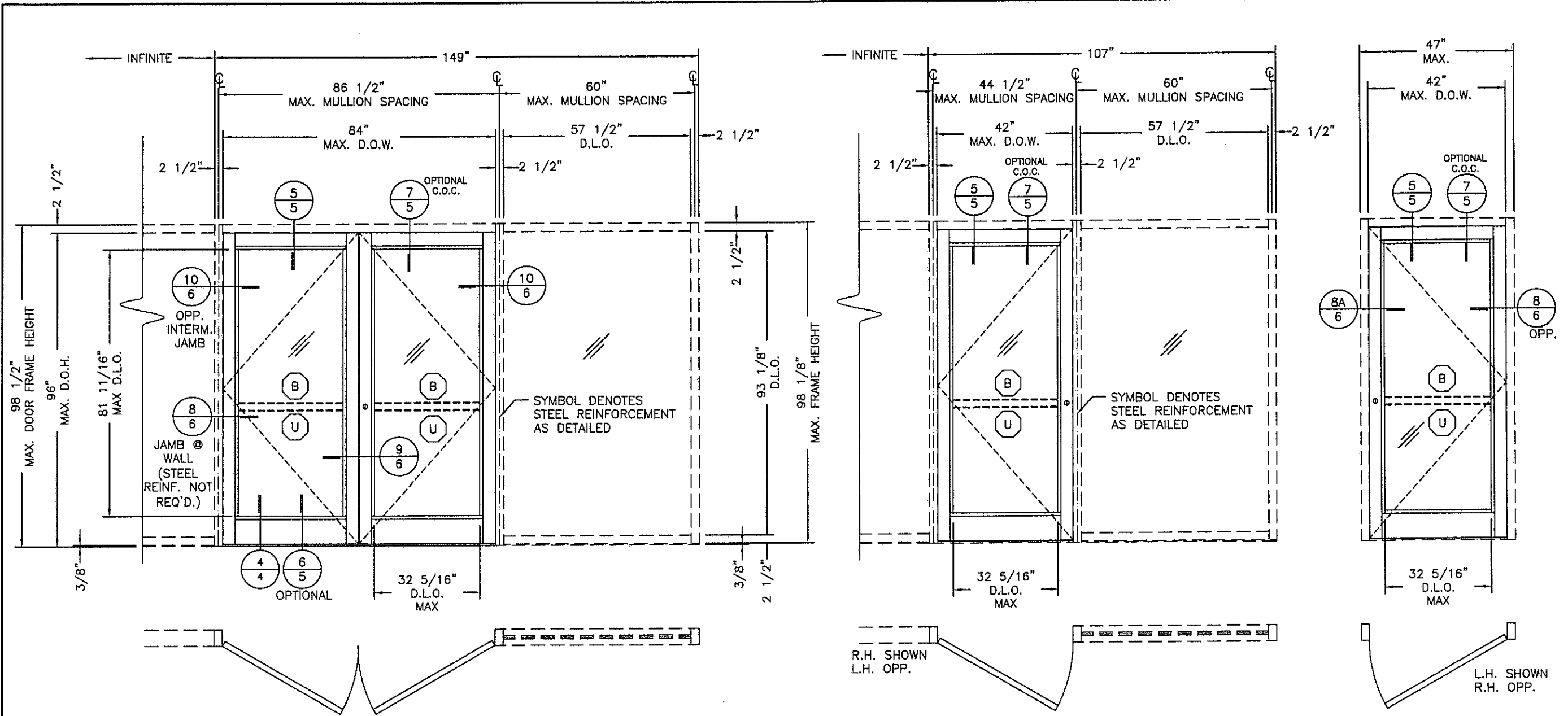
DRAWN MLL	CHECKED JDW	APPROVED JDW
--------------	----------------	-----------------

PROJECT NO.

DRAWING NO.
 381_03

SHEET 1 OF 14

DRAWINGS FOR
 DADE COUNTY
 PRODUCT APPROVAL



**TYPICAL ELEVATIONS FOR SERIES 381 IMPACT DOORS
 INSTALLED IN FL500 FRAMING WITHOUT TRANSOM**
 (SEE SHEET 13 FOR HARDWARE OPTIONS)

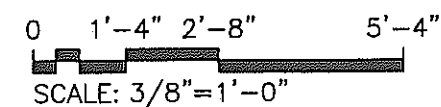
DESIGN PRESSURE +70/-80 PSF.

- NOTES:**
1. SEE SHEETS 10-12 FOR DOOR FRAME PERIMETER FASTENER LOCATIONS.
 2. DOOR GLASS SIZE= D.L.O. + 1-1/2".
 3. SEE FL500 PRODUCT APPROVALS FOR OTHER FRAME AND GLAZING OPTIONS.
 4. DOOR GLASS STOPS DG501 AND DG502 MAY BE REVERSED.
 5. THESE DOORS WERE NOT TESTED FOR WATER INFILTRATION.

Lewis A. Waldrop, P.E.
 P. O. Box 620
 Alto, GA 30510
 706-778-3784

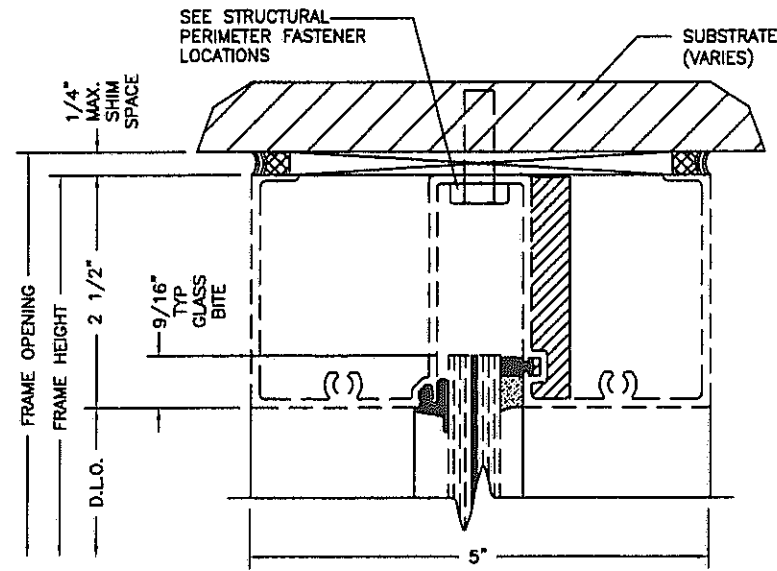
Lewis A. Waldrop, P.E.
 FLA. P.E. #21959

Lewis A. Waldrop
 2/4/08

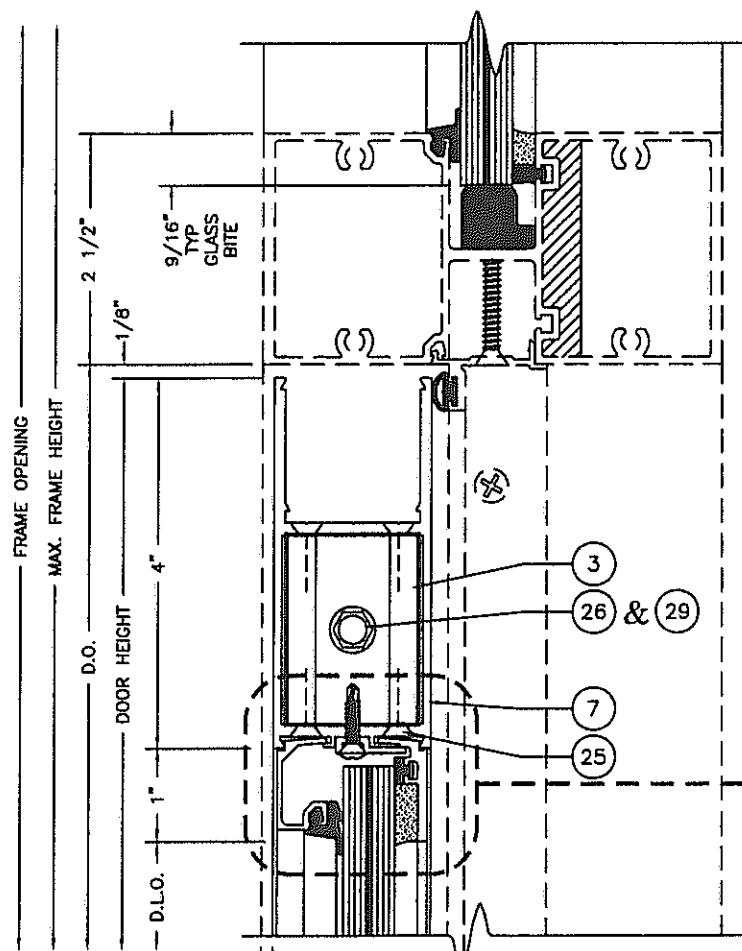


DRAWINGS FOR
 DADE COUNTY
 PRODUCT APPROVAL

		Architectural Products 3010 RICE WINE ROAD, TUSCALOOSA, AL 35606 PHONE: 800-772-7737 FAX: 800-255-7320
PRODUCT APPROVAL DRAWINGS SERIES 381 DOORS-IMPACT PROTOCOLS: PA201/202/203	FRAMING AND DOOR ELEVATIONS	DATE: 1/8/2008 DRAWN: MLL CHECKED: JDW APPROVED: JDW PROJECT NO.: DRAWING NO.: 381_03 SHEET: 3 OF 14

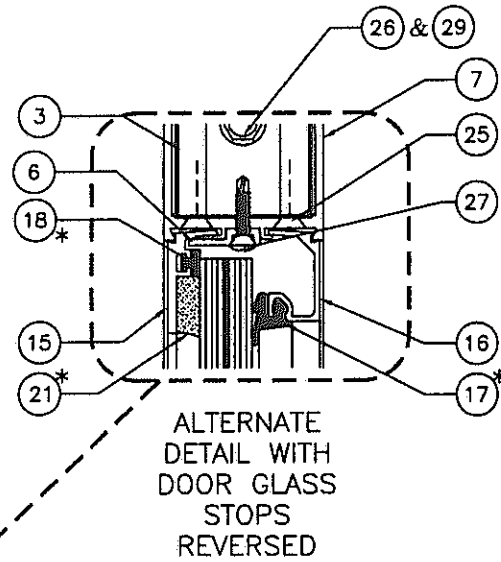


1 - TRANSOM HEAD



2 - TOP RAIL @ TRANSOM BAR FOR S.A.C.

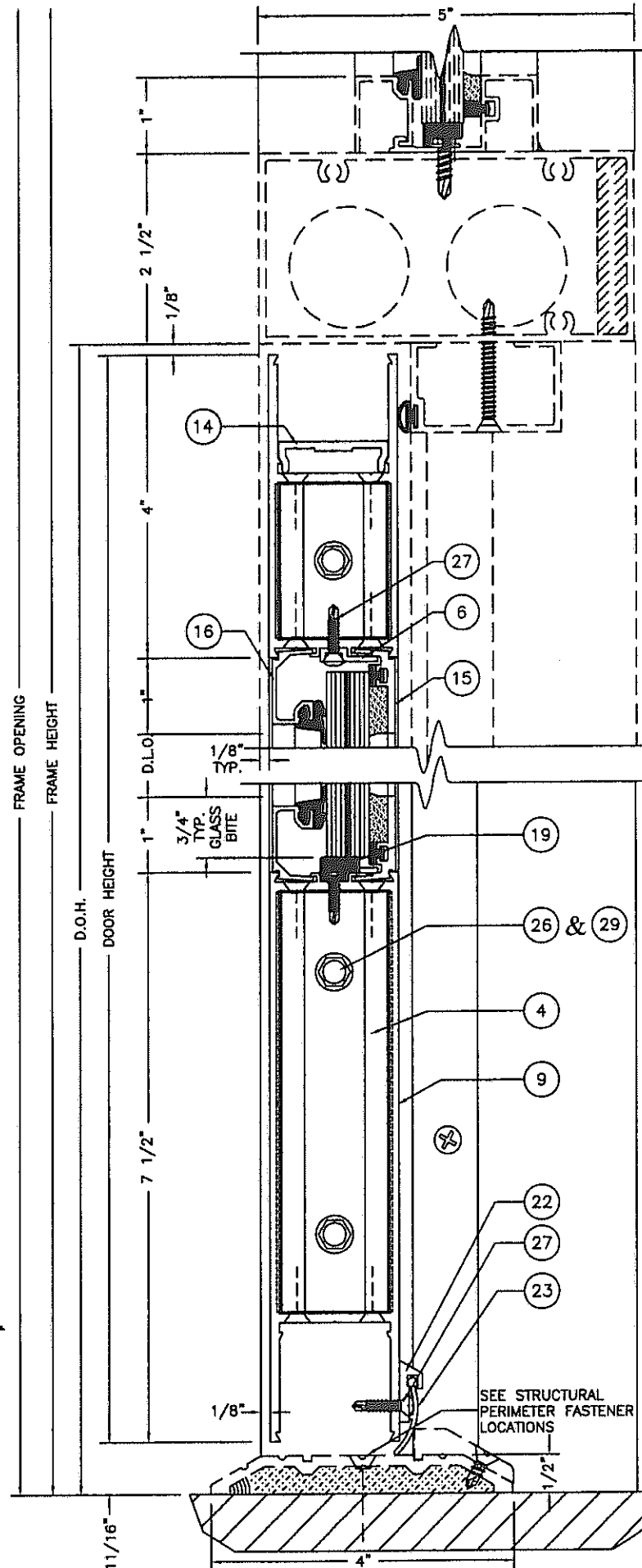
TYPICAL GLASS BITE IS 3/4" UNLESS OTHERWISE NOTED
TYPICAL SHIM SPACE IS 1/4" UNLESS OTHERWISE NOTED



ALTERNATE DETAIL WITH DOOR GLASS STOPS REVERSED

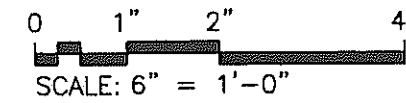
4 - BOTTOM RAIL @ THRESHOLD

NOTE: THE INTERIOR IS ON THE RIGHT OF THE VERTICAL SECTION CUTS UNLESS OTHERWISE NOTED



3 - TOP RAIL @ TRANSOM BAR WITH C.O.C. FOR OFFSET ARM

- 17 * TYPICAL EXTERIOR GASKET
- 18 * TYPICAL INTERIOR SPACER GASKET



Lewis A. Waldrop, P.E.
FLA. P.E. #21959

Lewis A. Waldrop
2/2/08

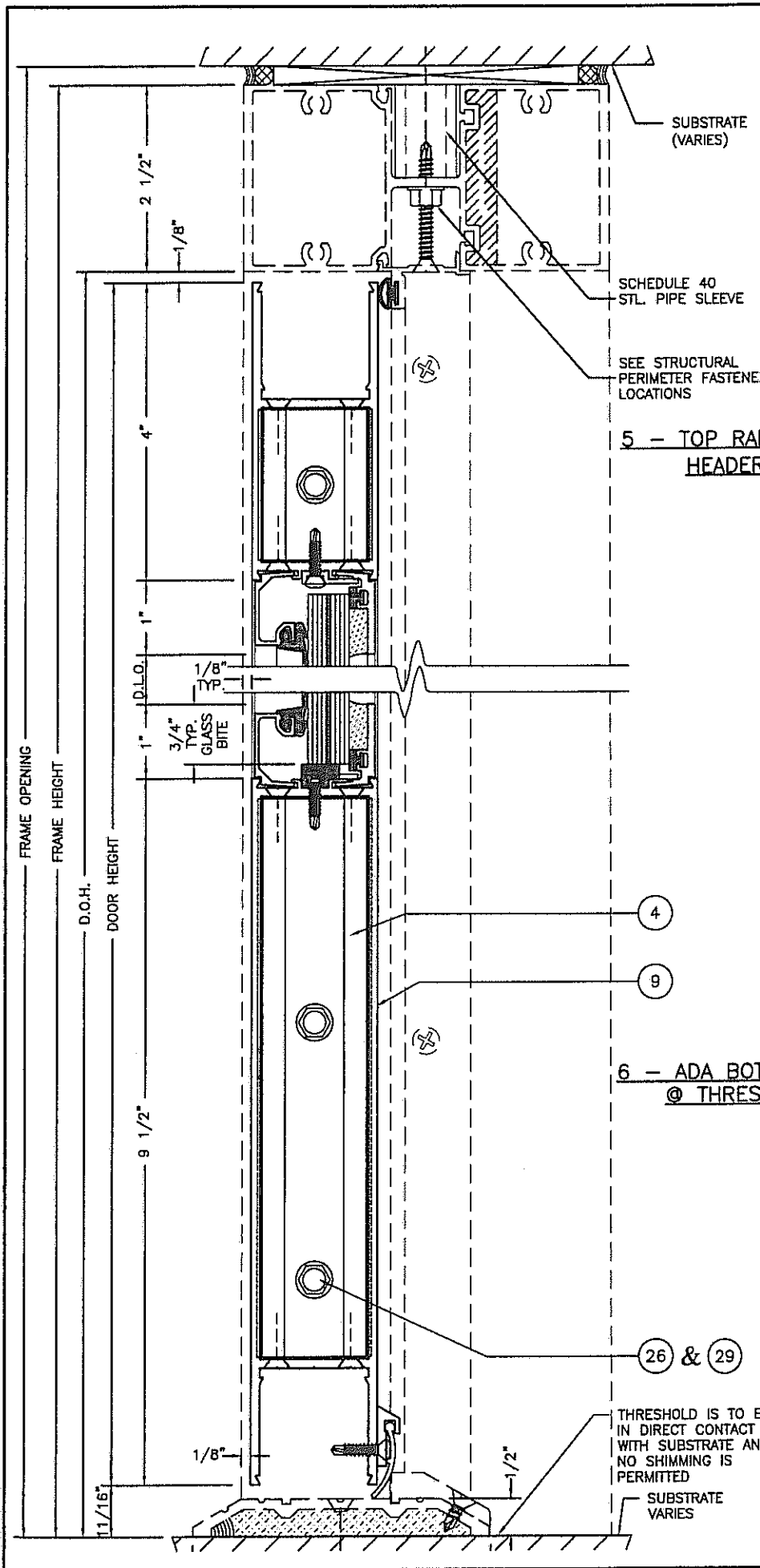
Lewis A. Waldrop, P.E.
P. O. Box 620
Alto, GA 30510
706-778-3784

SEE STRUCTURAL PERIMETER FASTENER LOCATIONS

DRAWINGS FOR FLORIDA PRODUCT APPROVAL

DATE			1/8/2008
DRAWN	CHECKED	APPROVED	
MLL	JDW	JDW	
PROJECT NO.			
DRAWING NO.			381_03
SHEET			4 OF 14

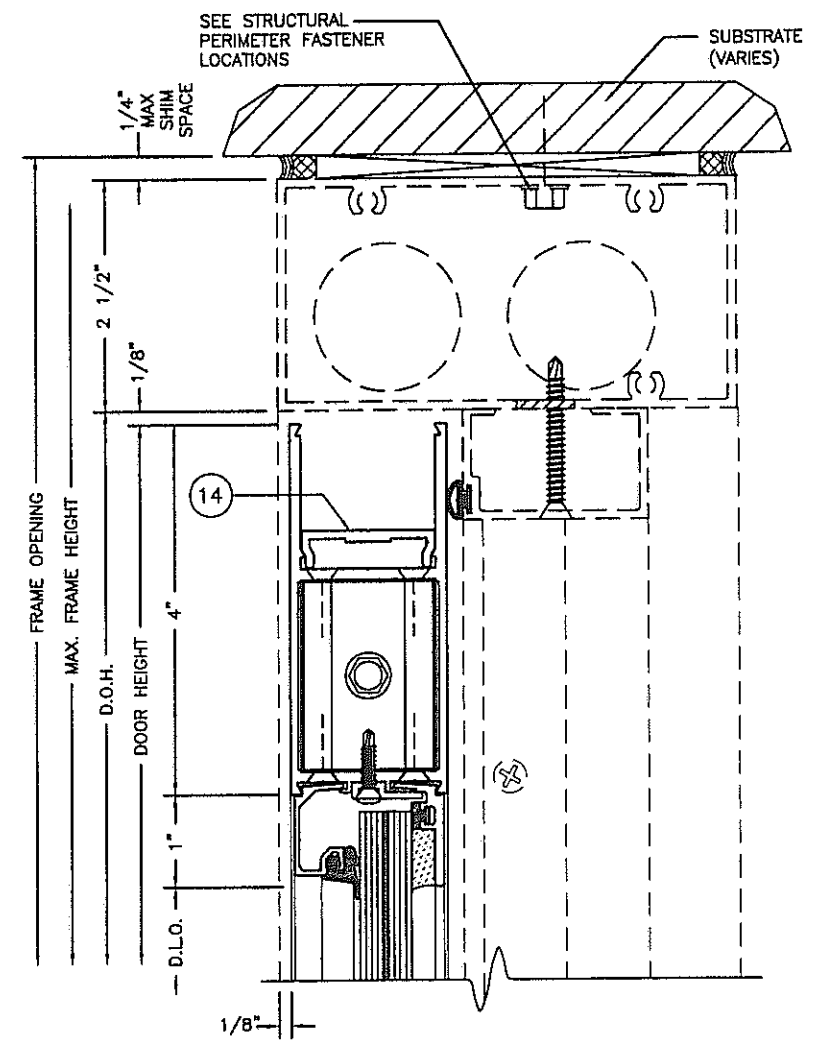
Corral
Architectural Products
3010 RICE WHEAT ROAD, TUSCALOOSA, AL 35406
PHONE: 800-772-7737 FAX: 800-443-6261



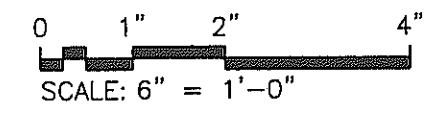
5 - TOP RAIL @ DOORFRAME
HEADER FOR S.A.C.

6 - ADA BOTTOM RAIL
@ THRESHOLD

THRESHOLD IS TO BE
IN DIRECT CONTACT
WITH SUBSTRATE AND
NO SHIMMING IS
PERMITTED
SUBSTRATE
VARIES



7 - TOP RAIL @ TRANSOM HEADER
WITH C.O.C. FOR OFFSET ARM



Lewis A. Waldrop, P.E.
P. O. Box 620
Alto, GA 30510
706-778-3784

Lewis A. Waldrop, P.E.
FLA. P.E. #21959

Lewis A. Waldrop
4/21/08

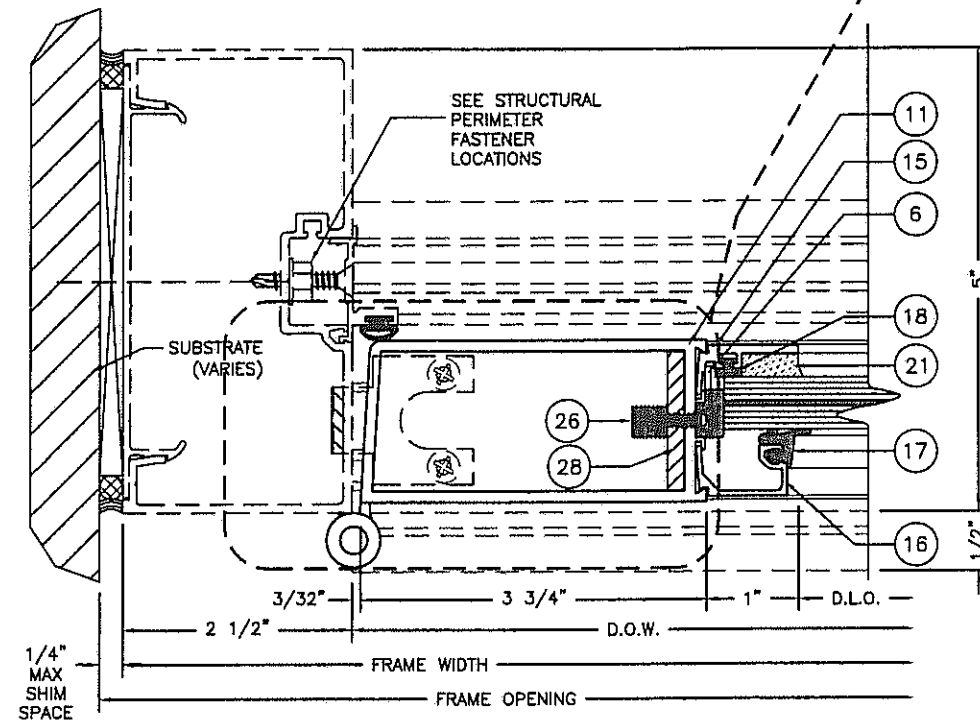
DRAWINGS FOR
DADE COUNTY
PRODUCT APPROVAL

DATE			1/8/2008
DRAWN	CHECKED	APPROVED	
MLL	JDW	JDW	
PROJECT NO.			
DRAWING NO.			381_03
SHEET			5 OF 14

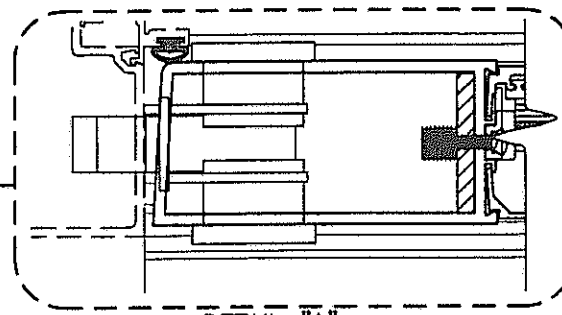
PRODUCT APPROVAL DRAWINGS
SERIES 381 DOORS-IMPACT
PROTOCOLS: PA201/202/203
DOOR AND FRAMING DETAILS

Coral
Architectural Products
3010 RICE MINE ROAD, TUSCALOOSA, AL 35408
PHONE: 800-772-7737 FAX: 800-255-7320

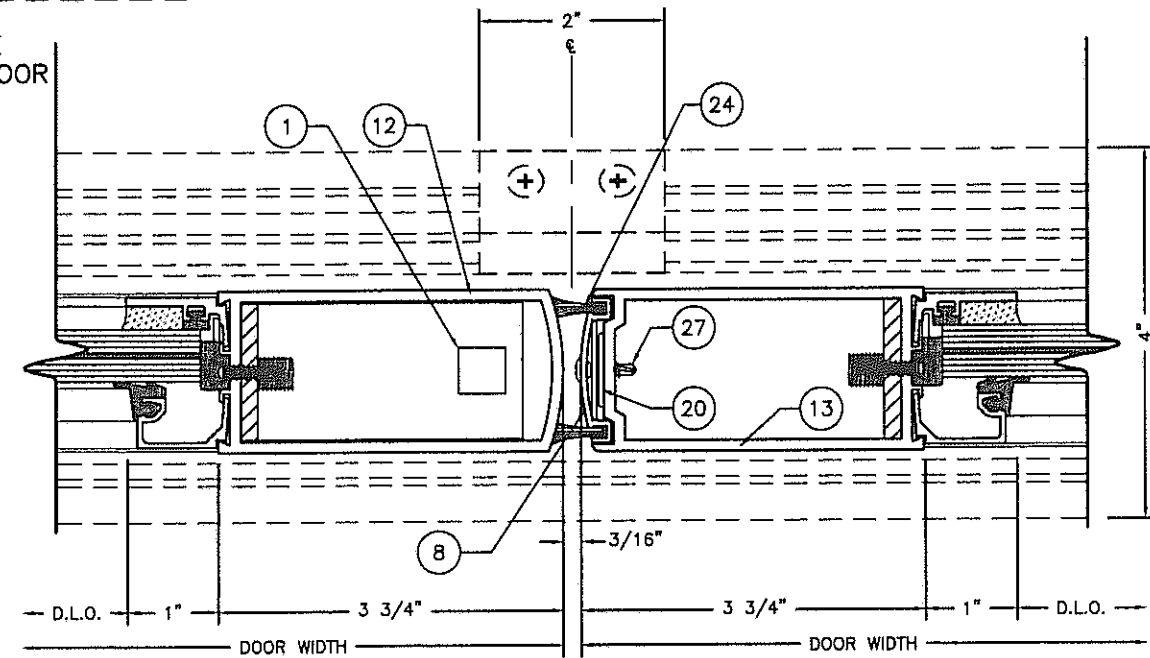
REV	BY	DATE	DESCRIPTION



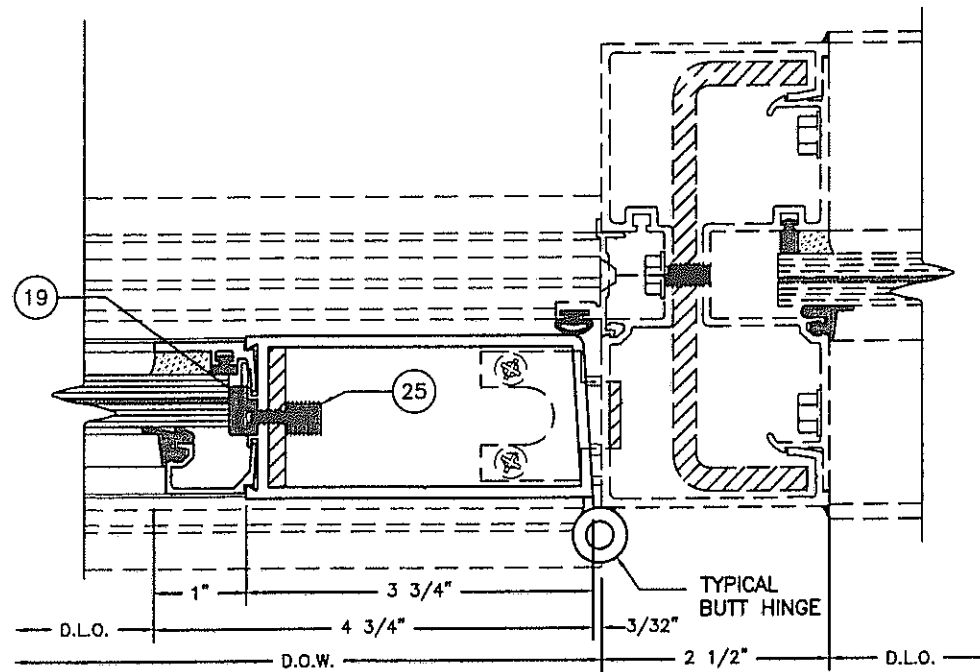
8 - DOORJAMB @ WALL



DETAIL "A"
LOCK STILE
FOR SINGLE DOOR

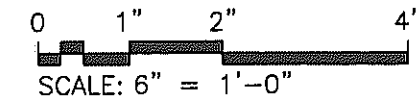


9 - MEETING STILES



10 - DOORJAMB @ SIDE LIGHT

Lewis A. Waldrop, P.E.
P. O. Box 620
Alto, GA 30510
706-778-3784



Lewis A. Waldrop, P.E.
FLA. P.E. #21959

Lewis A. Waldrop
4/21/08

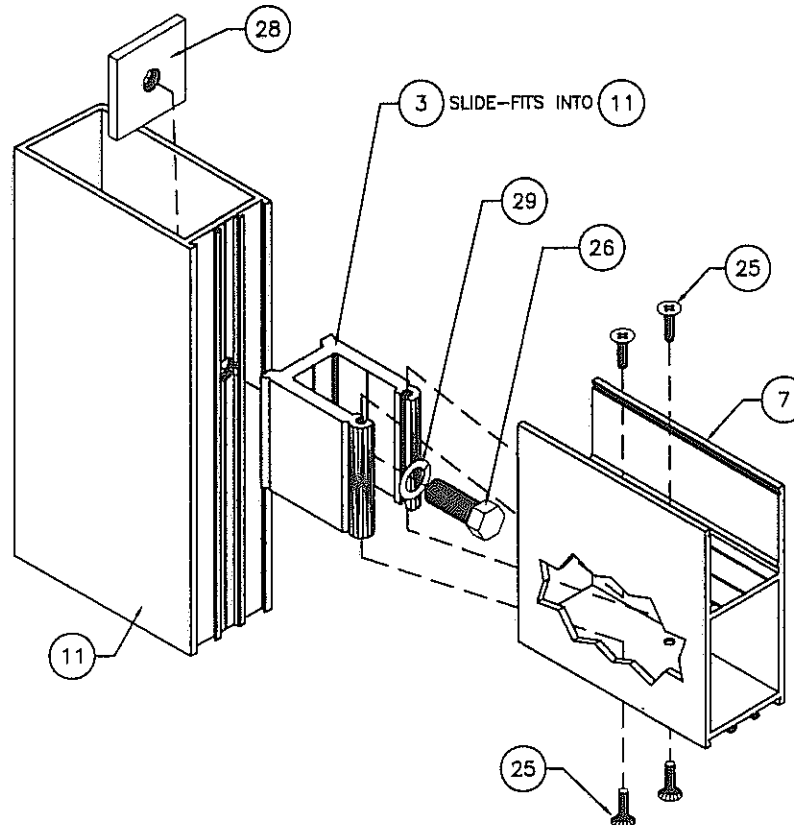
DRAWINGS FOR
DADE COUNTY
PRODUCT APPROVAL

PRODUCT APPROVAL DRAWINGS
SERIES 381 DOORS-IMPACT
PROTOCOLS: PA201/202/203
DOOR AND FRAMING DETAILS

DATE	1/8/2008	
DRAWN	CHECKED	APPROVED
MLL	JDW	JDW
PROJECT NO.		
DRAWING NO.	381_03	
SHEET	6 OF 14	

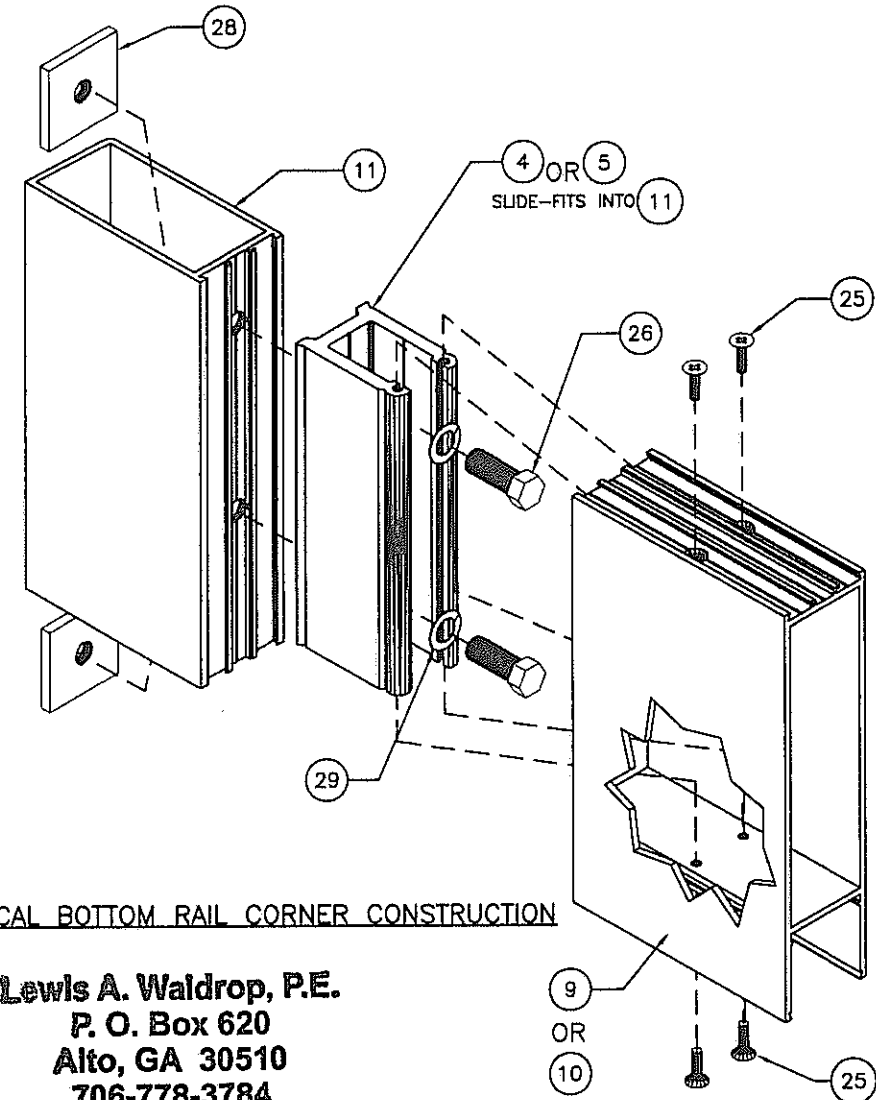
Coral
Architectural Products
3010 RICE WINE ROAD, TUSCALOOSA, AL 35408
PHONE 800-772-7737 FAX 800-255-7520

REV	BY	DATE	DESCRIPTION



TYPICAL TOP RAIL CORNER CONSTRUCTION

NOTE: DOOR CORNERS ARE NOT WELED

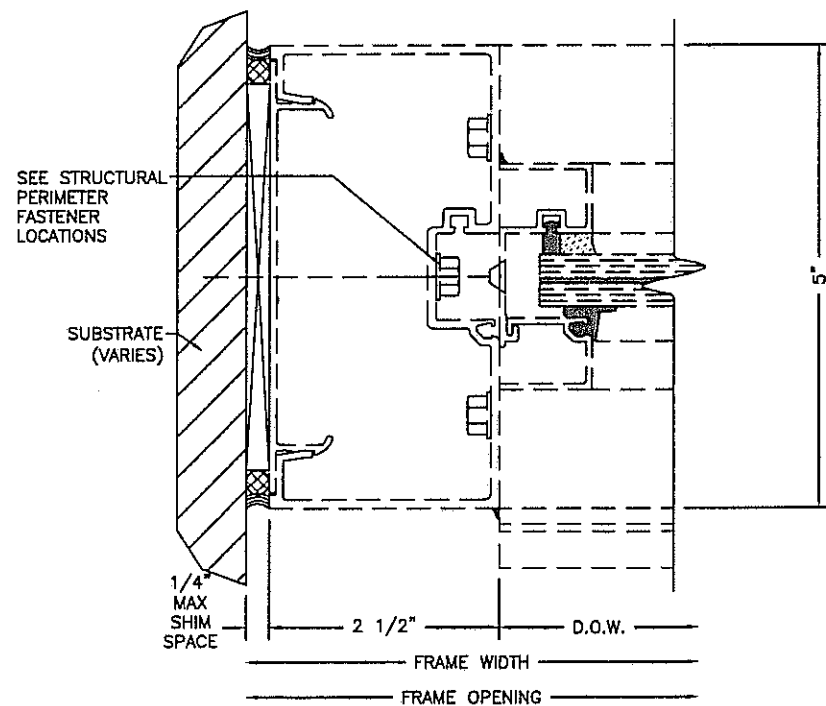


TYPICAL BOTTOM RAIL CORNER CONSTRUCTION

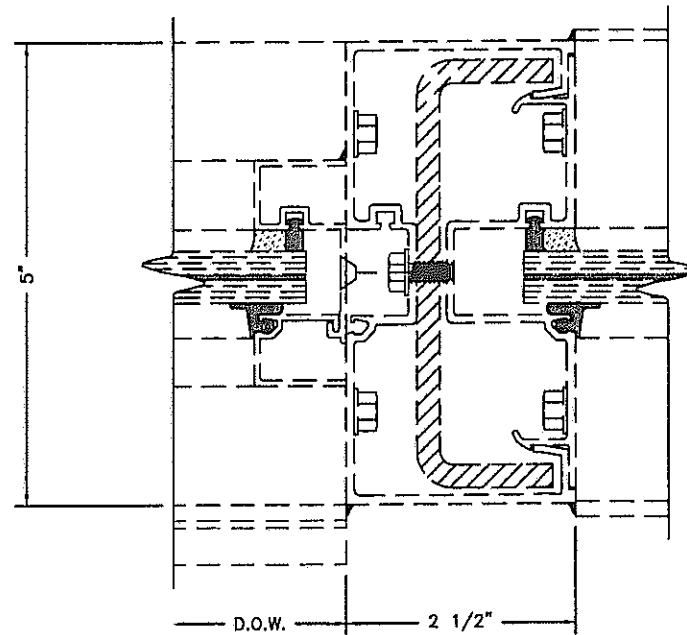
Lewis A. Waldrop, P.E.
 P. O. Box 620
 Alto, GA 30510
 706-778-3784

Lewis A. Waldrop, P.E.
 FLA. P.E. #21959

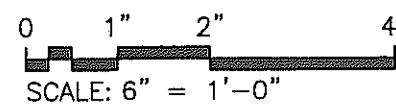
Lewis A. Waldrop
 2/21/08



11 - TRANSOM JAMB @ WALL



12 - TRANSOM JAMB @ SIDE LIGHT



REV	BY	DATE	DESCRIPTION

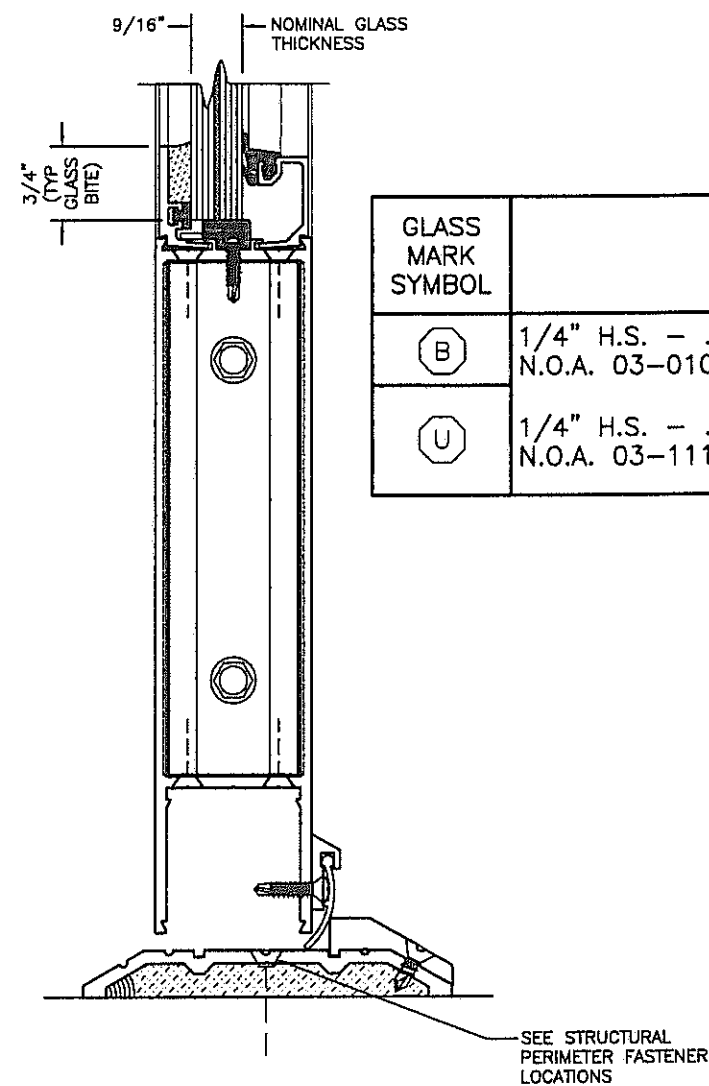
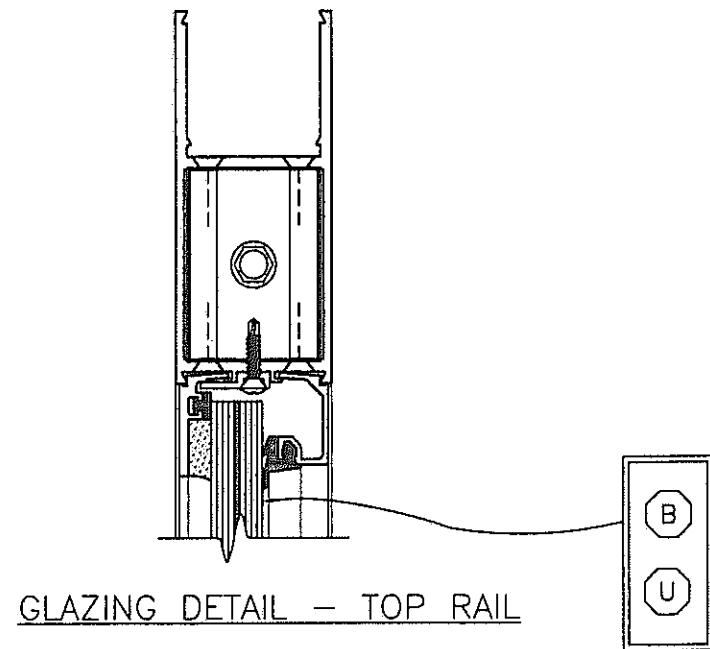
Conal
 Architectural Products
 3010 RICE WINE ROAD, TUSCALOOSA, AL 35406
 PHONE: 800-772-7737 FAX: 800-255-7320

PRODUCT APPROVAL DRAWINGS
 SERIES 381 DOORS-IMPACT
 PROTOCOLS: PA201/202/203
 DOOR AND FRAMING DETAILS

DATE	1/8/2008
DRAWN	MLL
CHECKED	JDW
APPROVED	JDW
PROJECT NO.	
DRAWING NO.	381_03
SHEET	7 OF 14

DRAWINGS FOR
 DADE COUNTY
 PRODUCT APPROVAL

GLAZING SCHEDULE

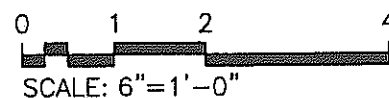


TYPICAL DOOR GLASS SIZE = DLO + 1-1/2"

MAXIMUM DESIGN PRESSURE +/-65 PSF

GLASS MARK SYMBOL	GLASS TYPE	MANUFACTURER	OPTIONS AND LIMITATIONS			
			MAXIMUM DLO (INCHES)	MAXIMUM SQUARE FEET	MAX. D.O. (INCHES) PAIR	MAX D.O. (INCHES) SINGLE
B	1/4" H.S. - .090 SAFLEX PVB SOLUTIA INTERLAYER - 1/4" H.S. N.O.A. 03-0105.02	VARIES	32 5/16 X 81 11/16	18.3	84 X 96	42 X 96
U	1/4" H.S. - .120 TYPE "S" UVEKOL INTERLAYER - 1/4" H.S. N.O.A. 03-1117.05	CORAL INDUSTRIES, INC.	32 5/16 X 81 11/16	18.3	84 X 96	42 X 96

Lewis A. Waldrop, P.E.
P. O. Box 620
Alto, GA 30510
706-778-3784



Lewis A. Waldrop, P.E.
FLA. P.E. #21959

Lewis A. Waldrop
1/8/08

DRAWINGS FOR
DADE COUNTY
PRODUCT APPROVAL

REV	BY	DATE	DESCRIPTION

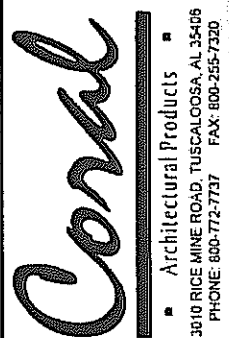
Coral
Architectural Products
3010 RICE MINE ROAD, TUSCALOOSA, AL 35408
PHONE: 800-772-7737 FAX: 800-355-7320

PRODUCT APPROVAL DRAWINGS
SERIES 381 DOORS-IMPACT
PROTOCOLS: PA201/202/203
GLAZING SCHEDULE

DATE	1/8/2008	
DRAWN	CHECKED	APPROVED
MLL	JDW	JDW
PROJECT NO.		
DRAWING NO.	381_03	
SHEET	8 OF 14	

BILL OF MATERIALS

ITEM NO.	P/N	DESCRIPTION	DIMENSIONS	MATERIAL	MANUFACTURER	NOTES
1	BP380	STEEL BACK-UP PLATE/FLUSH BOLT GUIDE	1.475 X 3.282X 3.062 X 0.180	ZINC PLATED STEEL	VARIES	USED TOP & BOTTOM (12)
2	BP450	STEEL BACK-UP PLATE FOR HINGE ATTACHMENT		ZINC PLATED STEEL	VARIES	
3	CB102	DOOR- CORNER BLOCK	2.130 X 1.540 X 0.250	6063-T6 ALUMINUM	CORAL INDUSTRIES, INC.	CUT 2.032 LONG
4	CB108	DOOR- CORNER BLOCK	2.130 X 1.540 X 0.250	6063-T6 ALUMINUM	CORAL INDUSTRIES, INC.	CUT 5.553 LONG
5	CB109	DOOR- CORNER BLOCK	2.130 X 1.540 X 0.250	6063-T6 ALUMINUM	CORAL INDUSTRIES, INC.	CUT 7.513 LONG
6	CS501-1	GLASS STOP CLIP	0.178 X 0.769 X 0.068	6063-T6 ALUMINUM	CORAL INDUSTRIES, INC.	USED WITH (15)
7	D102	DOOR RAIL	4.000 X 1.710 X 0.120	6063-T6 ALUMINUM	CORAL INDUSTRIES, INC.	
8	D106	DOOR- ADJUSTABLE ASTRAGAL	0.331 X 1.562 X 0.062	6063-T6 ALUMINUM	CORAL INDUSTRIES, INC.	
9	D108	DOOR- STANDARD BOTTOM RAIL	7.500 X 1.710 X 0.120	6063-T6 ALUMINUM	CORAL INDUSTRIES, INC.	
10	D109	DOOR- ADA BOTTOM RAIL	9.500 X 1.710 X 0.120	6063-T6 ALUMINUM	CORAL INDUSTRIES, INC.	
11	D110	DOOR -HINGE STILE	3.750 X 1.750 X 0.120	6063-T6 ALUMINUM	CORAL INDUSTRIES, INC.	
12	D111	DOOR- INACTIVE MEETING STILE	3.750 X 1.750 X 0.120	6063-T6 ALUMINUM	CORAL INDUSTRIES, INC.	
13	D112	DOOR- ACTIVE MEETING STILE	3.614 X 1.750 X 0.120	6063-T6 ALUMINUM	CORAL INDUSTRIES, INC.	
14	DB122-1	CHANNEL SPACER	4.406 X 1.455 X 0.090	6063-T6 ALUMINUM	CORAL INDUSTRIES, INC.	CUT 12" LONG
15	DG501	DOOR- GLASS STOP- ATTACHED	1.000 X 0.539 X 0.100	6063-T6 ALUMINUM	CORAL INDUSTRIES, INC.	
16	DG502	DOOR- GLASS STOP-SNAP-IN	0.876 X 0.539 X 0.065	6063-T6 ALUMINUM	CORAL INDUSTRIES, INC.	
17	NG1	EXTERIOR GLAZING GASKET	0.188 SPACE	EPDM	VARIES	
18	NG13	SPACER GASKET FOR	0.201 X 0.288	EPDM	VARIES	
19	SB11	DOOR-SETTING/ EDGE BLOCK	0.319 X 0.523 X 4.000"	EPDM	VARIES	
20	SP100	ADJUSTABLE ASTRAGAL SPRING	1.055 X 0.485 X 0.055	S. STEEL	CORAL INDUSTRIES, INC.	USED AT (8) WITH (28)
21	995	SILICONE -GLASS TO METAL & INTERNAL	FILL SPACE	SILICONE	DOW CORNING	GLASS TO METAL & INTERIOR
22	VG1	WEATHERING FOR (WS100) DOOR SWEEP	1.142 X 0.120 X 0.060	SOFT VINYL	CORAL INDUSTRIES, INC.	CUT TO D.O.W. (LESS CLEARANCE)
23	WS100	DOOR SWEEP	0.812 X 0.302 X 0.125	6063-T6 ALUMINUM	CORAL INDUSTRIES, INC.	CUT TO D.O.W. (LESS CLEARANCE)
24	WP106	WEATHERING @ ADJUSTABLE ASTRAGAL	VARIABLE SPACE	WOOL PILE	VARIES	DOUBLE ROW- FULL LENGTH OF (8)
25	AS1	FASTENER	# 10 X 3/4" FHP	STEEL	VARIES	
26	AS4	CAP BOLT	3/8"-16 X 3/4" HWH	STEEL	VARIES	
27	AS7	FASTENER	#8 X 3/4" POH S.D.	STEEL	VARIES	
28	AS13	SQUARE NUT	1.475 X 1.475 X 0.180	ZINC PLATED STEEL	CORAL INDUSTRIES, INC.	
29	AS41	3/8" LOCK WASHER	0.377 X 0.141 X 1.094	STEEL	VARIES	

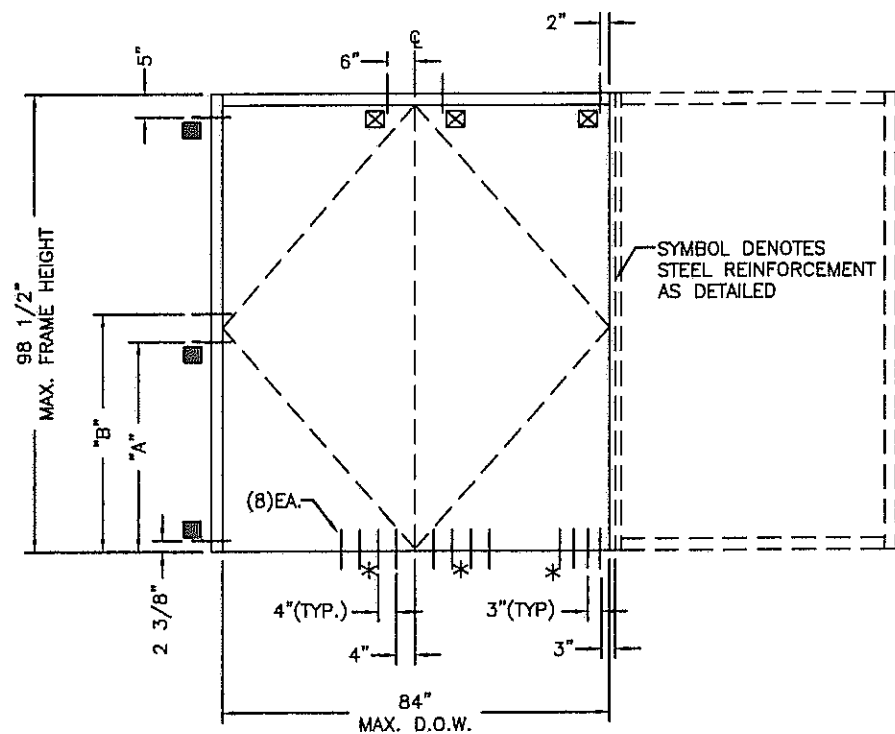
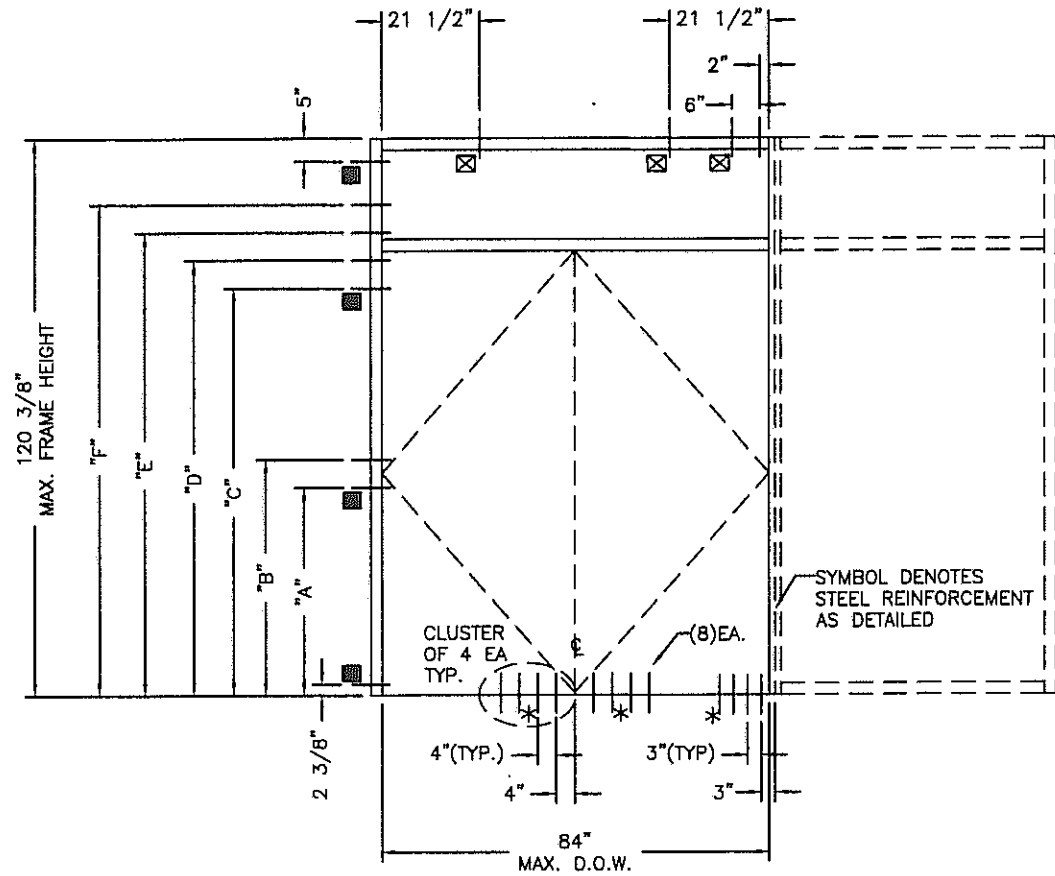


PRODUCT APPROVAL DRAWINGS
 SERIES 381 DOORS-IMPACT
 BILL OF MATERIALS

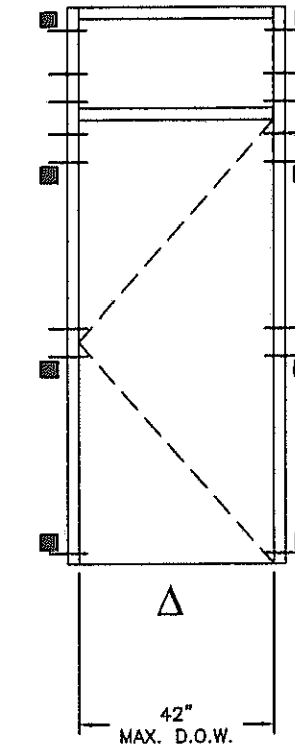
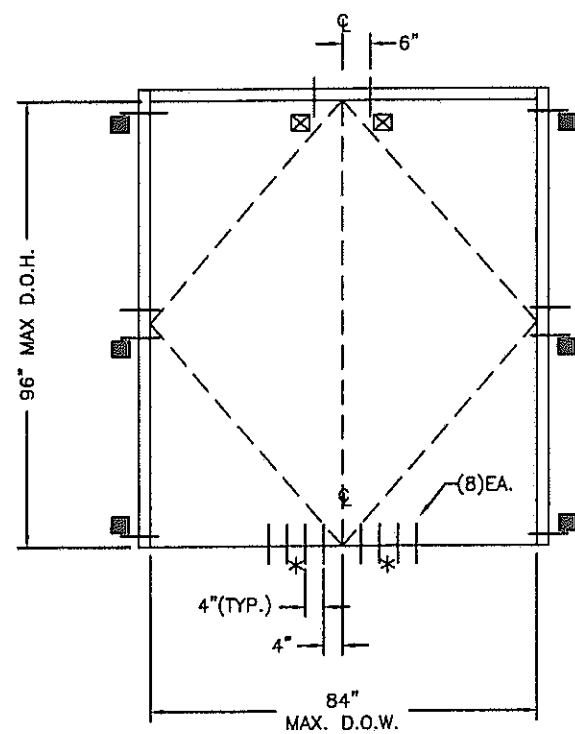
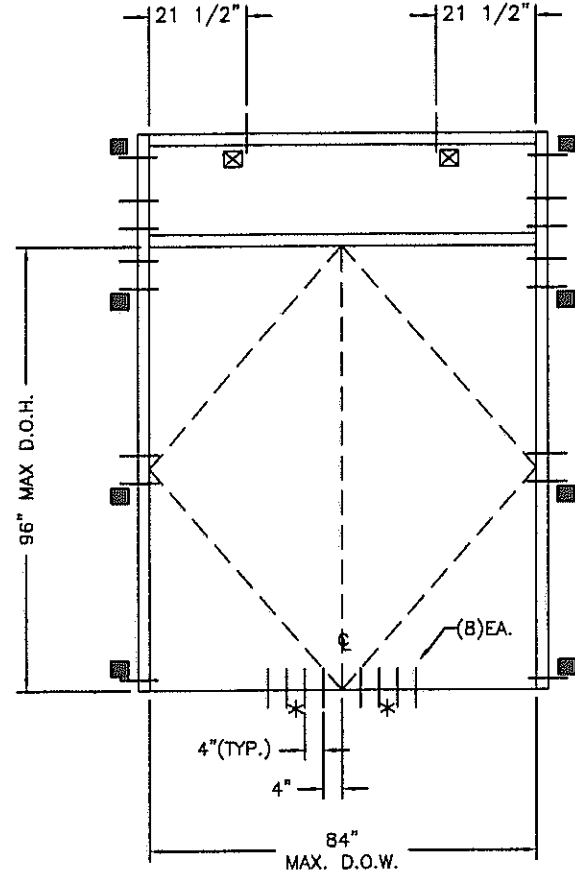
Lewis A. Waldrop, P.E. FLA. P.E. #21959		
2/21/08		
Lewis A. Waldrop, P.E. P. O. Box 620 Alto, GA 30510 706-778-3784		DRAWINGS FOR DADE COUNTY PRODUCT APPROVAL
DATE 1/8/2008		DRAWING NO. 381_03
DRAWN MLL	CHECKED JDW	APPROVED JDW
PROJECT NO.		SHEET 9 OF 14

PERIMETER FASTENER LOCATIONS

TYPICAL INSTALLATION INTO:
CONCRETE SUBSTRATE MIN. 2,500 P.S.I.



DOOR OPENING HEIGHT	ANCHOR LOCATIONS FOR "LETTER" DIM.					
	"A"	"B"	"C"	"D"	"E"	"F"
84"	45"	51"	76"	82"	89"	95"
96"	45"	51"	88"	94"	100"	106"



TYP. INSTALLATION INTO: 2,500 PSI CONCRETE SUBSTRATE

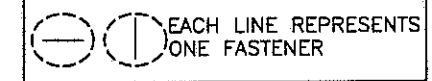
■	3/8" X 4-1/2" LDT, 2" MIN. EMBEDMENT WITH FILLER PLATE FULL LENGTH OF MULLION
⊠	3/8" X 2-1/2" LDT, 2" MIN. EMBEDMENT
*	1/4" X 2-1/2" PFH TAPCON, 1-3/4" MIN. EMBEDMENT
6" MIN. SPACING ⊕ 3/8"ϕ TAPCON	
3" MIN. SPACING ⊕ 1/4"ϕ TAPCON	

MAXIMUM DESIGN PRESSURE +70/-80

NOTES:

△ = STRUCTURAL FASTENERS NOT REQUIRED AT THRESHOLD.

LEGEND

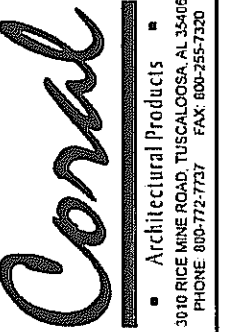


Lewis A. Waldrop, P.E.
FLA. P.E. #21959

Lewis A. Waldrop
1/21/08

Lewis A. Waldrop, P.E.
P. O. Box 620
Alto, GA 30510
706-778-3784

DRAWINGS FOR
DADE COUNTY
PRODUCT APPROVAL



PRODUCT APPROVAL DRAWINGS
SERIES 381 DOORS-IMPACT
FL500 DOORFRAME
PERIMETER FASTENER CHARTS

DATE	1/8/2008	
DRAWN	CHECKED	APPROVED
PCH	JDW	JDW
PROJECT NO.		
DRAWING NO.	381_03	
SHEET	10 OF 14	

PERIMETER FASTENER LOCATIONS

TYPICAL INSTALLATION INTO:
MIN. #2 SYP WOOD SUBSTRATE - THICKNESS
DETERMINED BY MIN. EMBEDMENT REQ'D

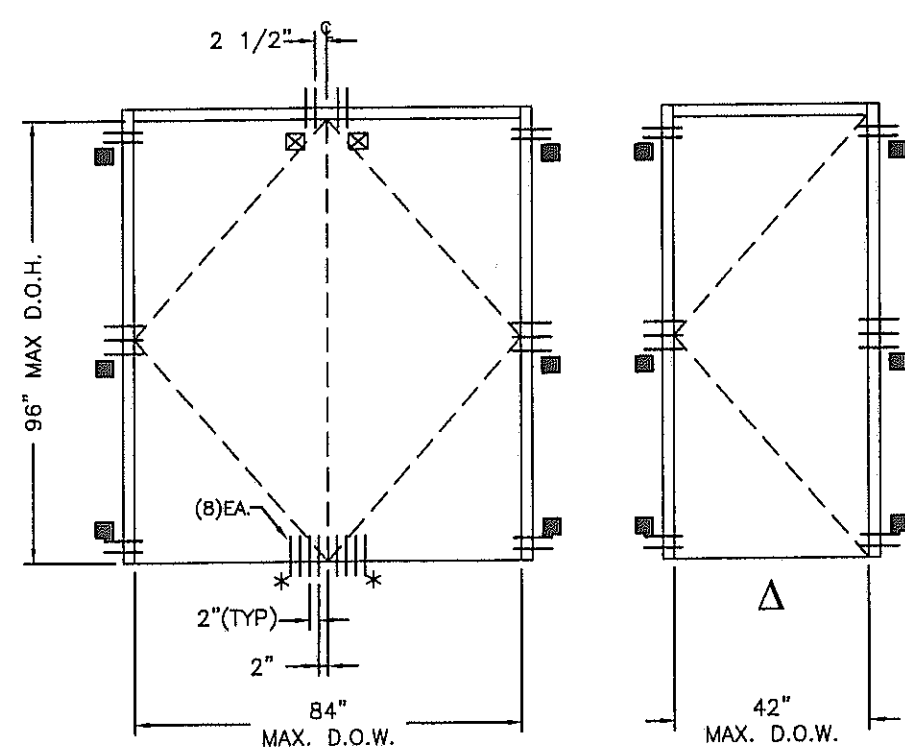
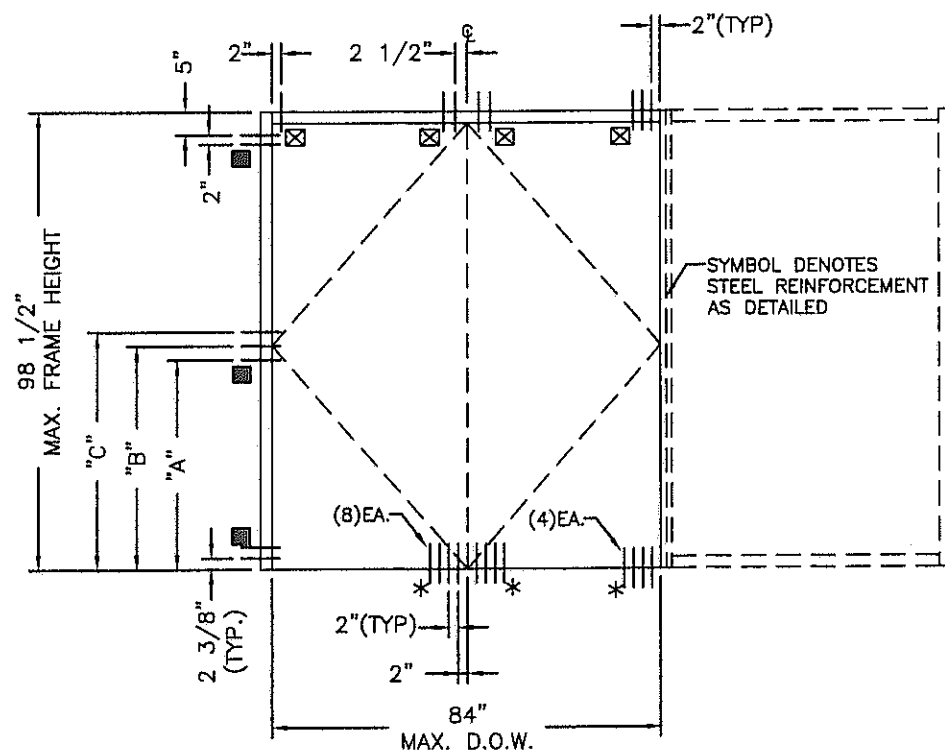
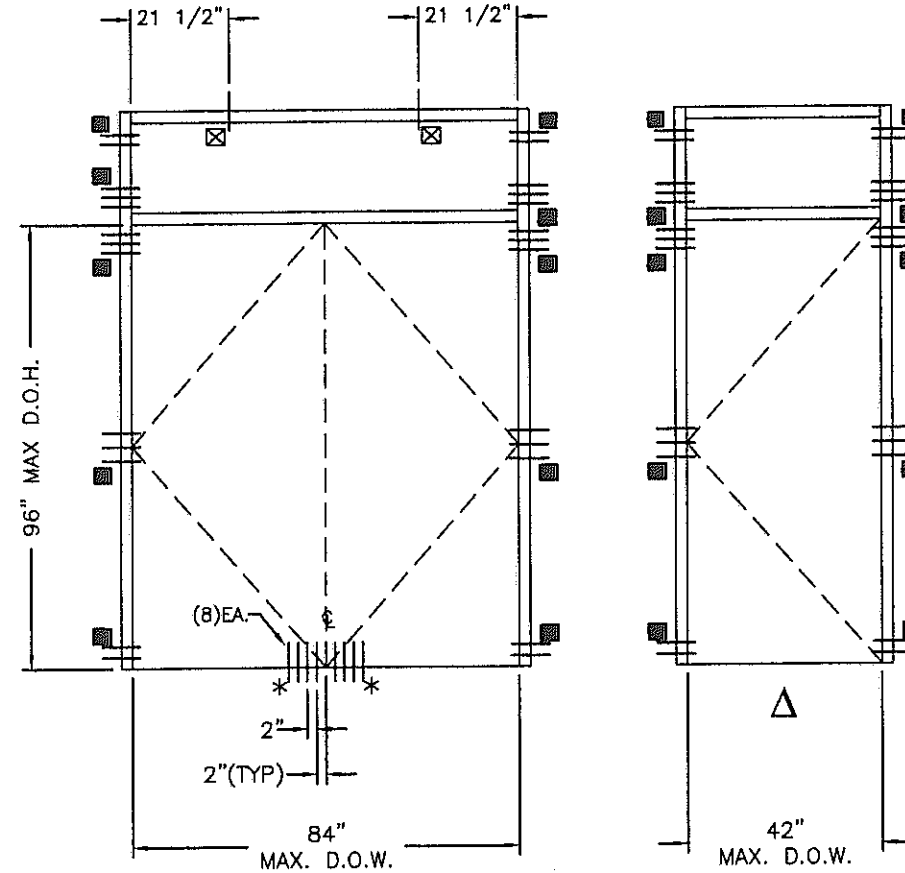
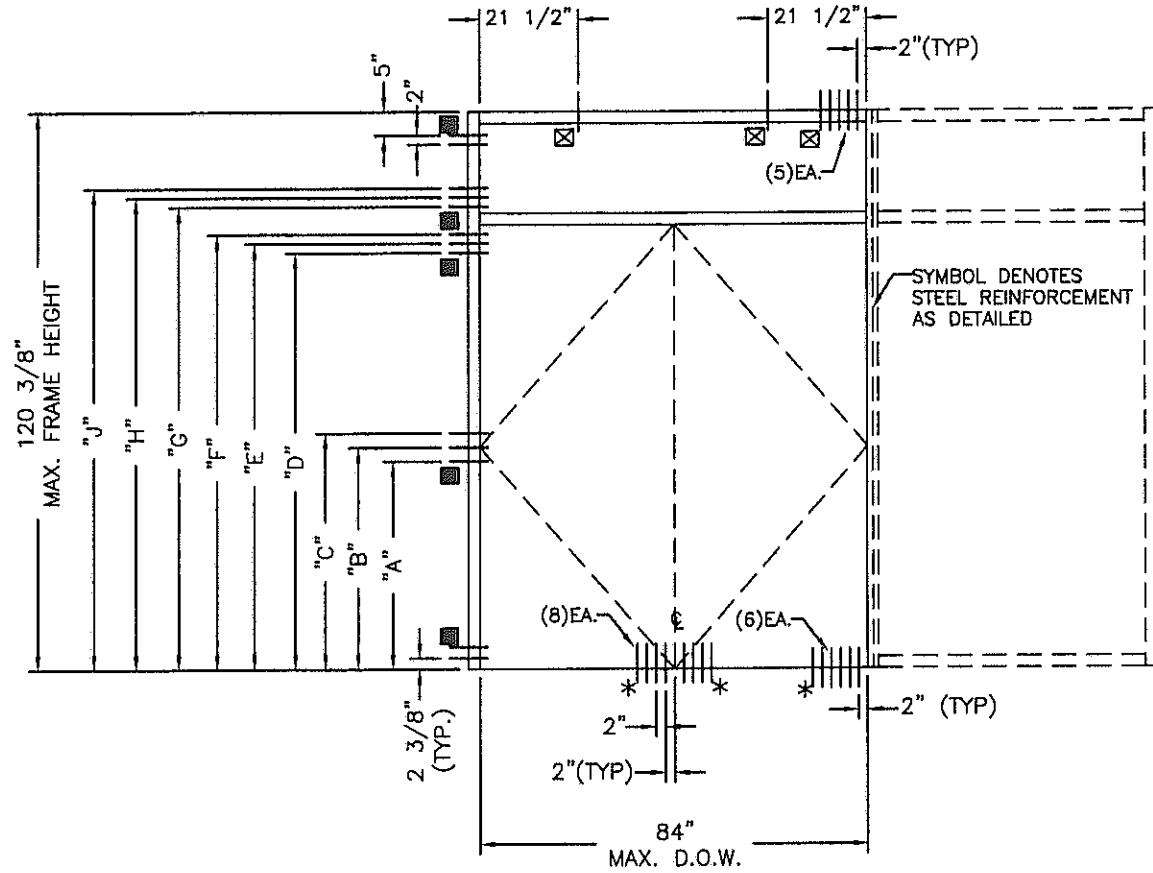
PERIMETER FASTENER LOCATIONS

DOOR OPENING HEIGHT	ANCHOR LOCATIONS FOR "LETTER" DIM.								
	"A"	"B"	"C"	"D"	"E"	"F"	"G"	"H"	"J"
84"	45"	48"	51"	78"	80"	82"	89"	91"	93"
96"	45"	48"	51"	90"	92"	94"	100"	102"	104"

TYP. INSTALLATION INTO:
WOOD SUBSTRATE

■	3/8" LAG BOLT WITH FILLER PLATE FULL LENGTH, 3" MIN. EMBEDMENT
⊠	3/8" X 3-1/2" LAG BOLT, 3" MIN. EMBEDMENT
*	#14 X 2-1/2" WOOD SCREW

EDGE DISTANCE 1 1/2", MIN. SPACING IS 2",
WOOD STRUCTURE IS MIN. #2 SYP



MAXIMUM DESIGN
PRESSURE +70/-80

NOTES:

△ = STRUCTURAL FASTENERS
NOT REQUIRED AT THRESHOLD.

LEGEND

⊠ ○ EACH LINE REPRESENTS
ONE FASTENER

Lewis A. Waldrop, P.E.
FLA. P.E. #21959

Lewis A. Waldrop
2/21/08

Lewis A. Waldrop, P.E.
P. O. Box 620
Alto, GA 30510
706-778-3784

DRAWINGS FOR
DADE COUNTY
PRODUCT APPROVAL

Coral
Architectural Products
3010 RICE MINE ROAD, TUSCALOOSA, AL 35408
PHONE: 800-772-7737 FAX: 800-255-7720

PRODUCT APPROVAL DRAWINGS
SERIES 381 DOORS-IMPACT
FL500 DOORFRAME
PERIMETER FASTENER CHARTS

DATE	1/8/2008	
DRAWN	CHECKED	APPROVED
PCH	JDW	JDW
PROJECT NO.		
DRAWING NO.	381_03	
SHEET	12 OF 14	

HARDWARE SCHEDULES

DADE COUNTY PRODUCT APPROVAL				DOOR MARK	DOOR: # TYPICAL	ELEV: TYPICAL
IMPACT	X			DOOR SIZE	7'-0 X 8'-0" PAIR	
		DOOR HINGING		LOCKING DEVICE	MANUFACTURER	NOTES:
DOOR TYPE		B.H.		DH072	X	VARIES
SERIES 381		X		EXIT DEVICES:		NOTES:
HARDWARE DESCRIPTION		PART NUMBER		QTY	MANUFACTURER	
BUTT HINGE 4 1/2" X 4"		DH109		6	HAGER	
PULL HANDLE		PH1-10		1	CORAL	
PUSH BAR		PB1-39		1	CORAL	
CYLINDER (ACTIVE)		DH078		1	VARIES	
THUMB TURN (ACTIVE) OPTIONAL		DH079		1	VARIES	
LOCK (ACTIVE)		DH072 (3-PT. LOCK)		1	VARIES	
FLUSH BOLT (INACTIVE)TOP/BTM 84" DOOR		DH176		1	VARIES	
FLUSH BOLT (INACTIVE)TOP ONLY 96" DOOR		DH176-96		1	VARIES	
DOOR BOTTOM SWEEP		WS142		2	CORAL	
NOTES:						
S.A.C. OR C.O.C. IS OPTIONAL						

DADE COUNTY PRODUCT APPROVAL				DOOR MARK	DOOR: # TYPICAL	ELEV: TYPICAL
IMPACT	X			DOOR SIZE	7'-0 X 8'-0" PAIR	
		DOOR HINGING		LOCKING DEVICE	MANUFACTURER	NOTES:
DOOR TYPE		B.H.				
SERIES 381		X		EXIT DEVICES:		NOTES:
				JACKSON	X	2086
HARDWARE DESCRIPTION		PART NUMBER		QTY	MANUFACTURER	
CLOSER - CONCEALED OVERHEAD		CL205 H.D. W/ O. A. ASSY		2	JACKSON	
BUTT HINGE 4 1/2" X 4"		DH109		6	HAGER	
PULL HANDLE		PH401		2	CORAL	
CYLINDER (ACTIVE)		DH078		1	CORAL	
PANIC STOP		DP200-2		1	CORAL	
THRESHOLD		TH4		1	CORAL	
DOOR BOTTOM SWEEP		WS142		2	CORAL	
NOTES:						
S.A.C. OR C.O.C. IS OPTIONAL						

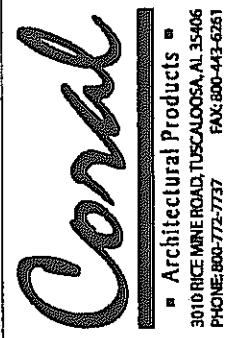
Lewis A. Waldrop, P.E.
 P. O. Box 620
 Alto, GA 30510
 706-778-3784

Lewis A. Waldrop, P.E.
FLA. P.E. #21959

Lewis A. Waldrop
2/1/08

DRAWINGS FOR
 DADE COUNTY
 PRODUCT APPROVAL

REV	BY	DATE	DESCRIPTION



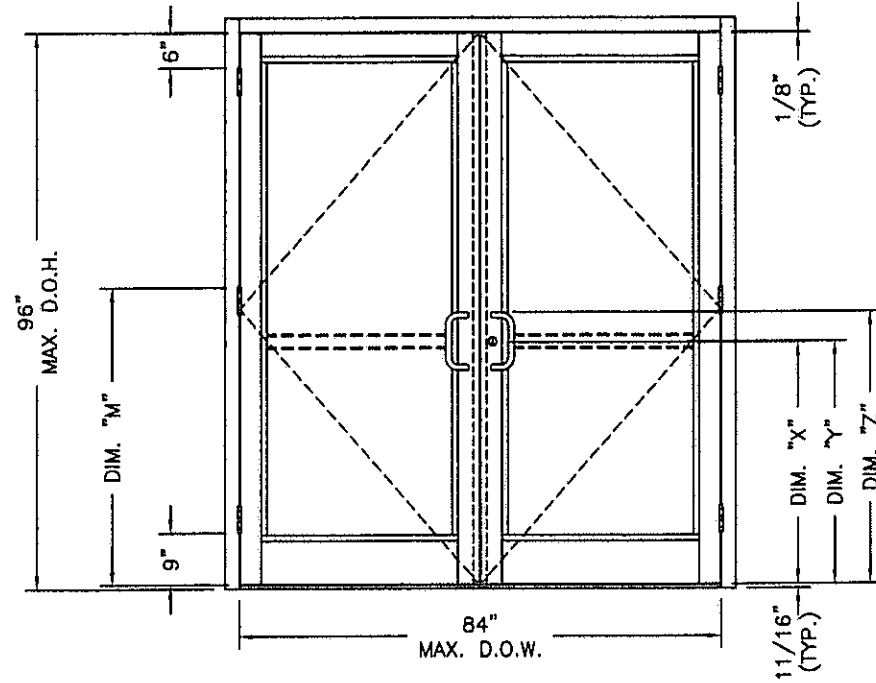
PRODUCT APPROVAL DRAWINGS
 SERIES 381 DOORS-IMPACT
 HARDWARE SCHEDULES

DATE 1/8/2008		
DRAWN MLL	CHECKED JDW	APPROVED JDW
PROJECT NO.		
DRAWING NO. 381_03		
SHEET 13 OF 14		

S:\Assemblies And Fabrications\C.A.P\MOCK-UPS\FPA\381_03 IMPACT DOORS 1-8-08\14 HARDWARE LOCATIONS.dwg, 1/8/2008 10:06:39 AM, phowel, Adobe PDF.pc3, Copy/fig

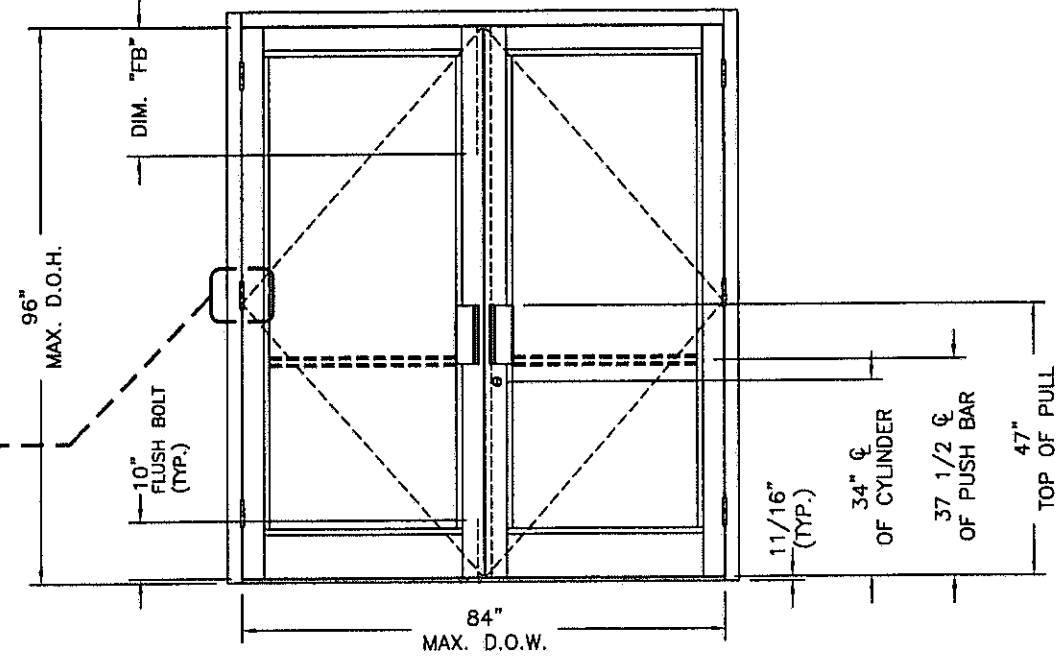
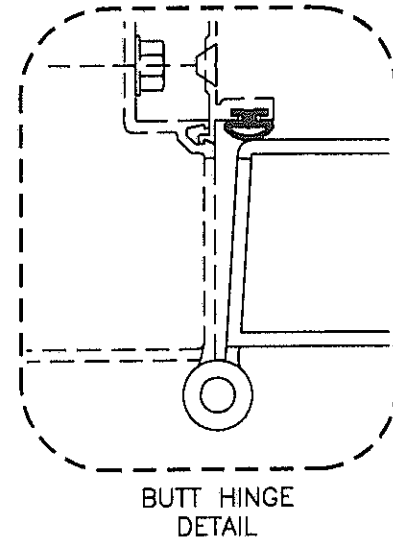
STANDARD HARDWARE LOCATIONS FOR SERIES 381 OFFSET HUNG HURRICANE IMPACT-RESISTANT DOORS

WITH JACKSON 2086 EXIT DEVICE &
1-1/2" PAIR BUTT HINGES

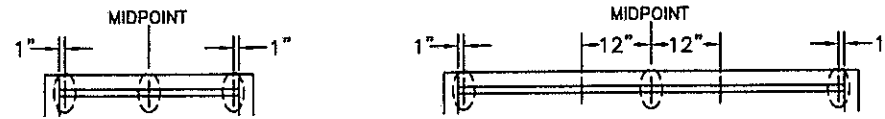


(DH072) 3-POINT LOCK (ACTIVE) AND (DH176) FLUSH BOLTS (INACTIVE)
WITH 1-1/2" PAIR BUTT HINGES

INTERMEDIATE HINGE LOCATION	
D.O. HEIGHT	DIM. "M"
	BUTT HUNG
84"	45-11/32"
96"	51-11/32"

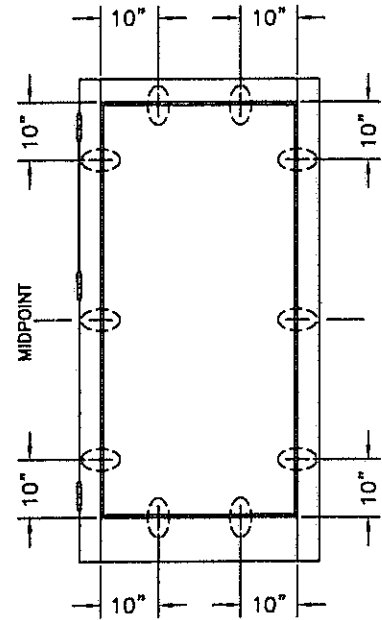


HDW LOCATIONS FOR PANIC DOORS				
MANUFACTURER	PANIC DEVICE	DIM "X" Ø OF CYLINDER	DIM "Y" Ø OF PANIC	DIM "Z" TOP OF PULL
JACKSON	2086 H.R.-C.V.R.	37 7/8"	38 5/32"	42 7/8"

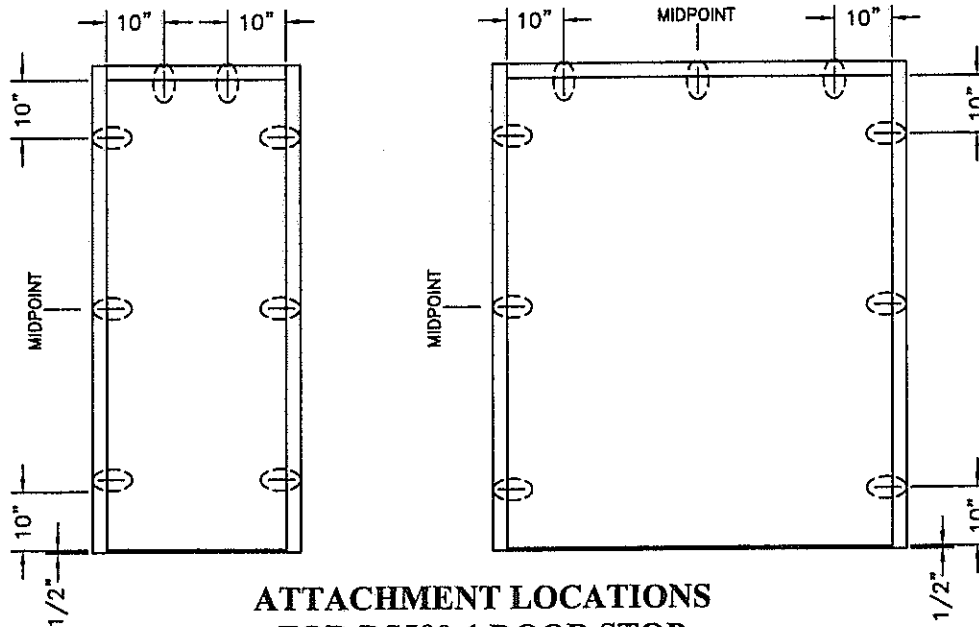


ATTACHMENT LOCATIONS
FOR DS202-1 DOOR STOP AT HEADER
(84" OR 96" DOOR HEIGHT)

P/N	DESCRIPTION	DIM "FB"
DH176-96	TOP FLUSH BOLT (FOR 96" DOOR HGT.)	22"
DH176	TOP FLUSH BOLT (FOR 84" DOOR HGT.)	10"
	BOTTOM FLUSH BOLT (FOR 84"/ 96" DOOR HGT.)	10"



ATTACHMENT LOCATIONS
FOR CS501-1 GLASS STOP CLIP
(84" OR 96" D.O.H.)



ATTACHMENT LOCATIONS
FOR DS500-1 DOOR STOP
(84" OR 96" D.O.H.)

Lewis A. Waldrop, P.E.
P. O. Box 620
Alto, GA 30510
706-778-3784

Lewis A. Waldrop, P.E.
FLA. P.E. #21959

Lewis A. Waldrop
2/21/08

DRAWINGS FOR
DADE COUNTY
PRODUCT APPROVAL

REV	BY	DATE	DESCRIPTION

Coral
Architectural Products
3070 RICE MIAMI ROAD, TUSCALOOSA, AL 35406
PHONE: 800-772-7737 FAX: 800-443-6261

PRODUCT APPROVAL DRAWINGS
SERIES 381 DOORS-IMPACT
HARDWARE LOCATIONS

DATE	1/8/2008		
DRAWN MLL	CHECKED JDW	APPROVED JDW	
PROJECT NO.			
DRAWING NO.	381_03		
SHEET	14 OF 14		